

Heaps of Seeds

PROGRAM OVERVIEW



Photo: Bob Balmer



Photo: Kristen Skiles



Photo: Liz West



Photo: Alex Masters



Photo: George Thomas



Photo: Smythe Richbourg

Objectives

MLS for K-2:

- PS1.A - Structure and Properties of Matter
- PS2.A - Forces and motion
- LS1.B - Growth and development of organisms
- LS1.C - Organization for matter and energy flow in ecosystems
- LS2.A - Interdependent relationships in ecosystems

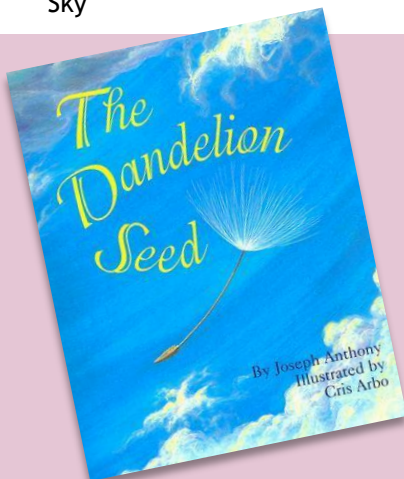
Missouri Early Learning Standards for PreK-Kindergarten

- II. Life Science
 - A. Explore, Investigate and Solve Problems of Living Things
- III. Earth Science
 - B. Solve Problems Involving Properties of the Earth and Sky

About the Program

Designed for students in Kindergarten through 2nd Grade, the Heaps of Seeds program draws young students' attention to the tiny, wondrous world of seeds. Students will participate in a variety of activities, including:

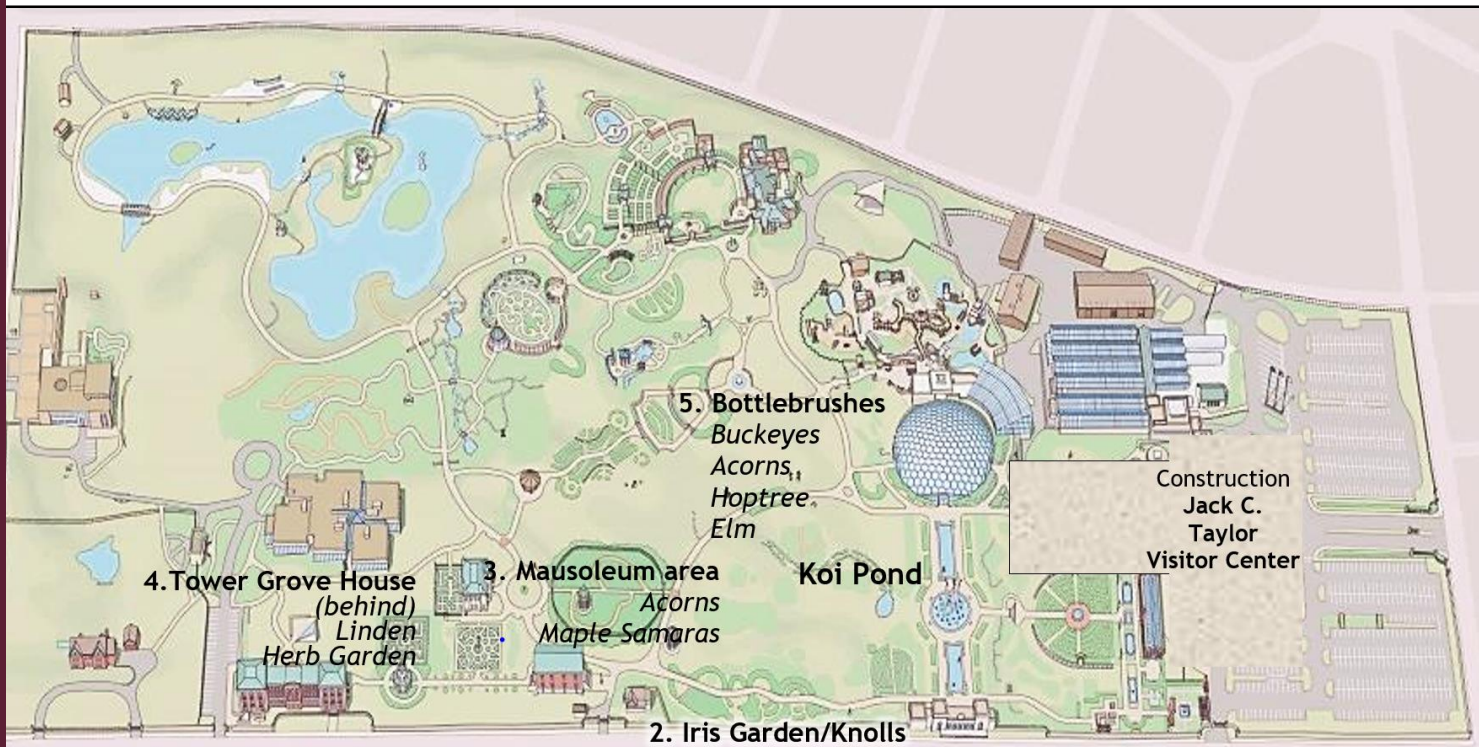
- **Participate in the listening and discussion of The Dandelion Seed**, by Joseph Anthony and Cris Arbo read by School Programs Early Childhood Instructor, Carmen Buchanan. The link to the story reading will be emailed the week of your field trip (**Pre-visit**).
- **Create a seed collection for your classroom** during a guided walk through the northern gardens of the Missouri Botanical Garden, while exploring the various methods by which seeds travel.
- **Dissect a lima bean** to learn about seed structure and find the tiny plant inside waiting to grow (**Post-visit**)
- **Plant a seed** to take home or to the classroom to observe.



About the Book

Featuring the captivating prose of Joseph Arbo against the dazzling painted backdrops created by his wife, Cris Arbo, The Dandelion Seed brings a seed's journey from maturity to germination into familiar territory for young children. The personified dandelion seed worries and resists the journey it is about to take, but finally sails off on the wind to begin its new life. At times it feels lonely and frightened, but it learns that the world is a beautiful place. When it finds the perfect home, the dandelion seed produces a flower and seeds of its own, and passes on the wisdom it has gained from its own journey to its own seeds about to take flight. The story is simple, sweet and relatable, and provides a foundation for this program's exploration of seed travel and the elements necessary to encourage seeds to germinate once they have found their way to their new homes.

During this program, students will venture into the Garden in search of seeds in the following areas: Hosta gardens, Iris Garden/Knolls, Mausoleum area, Tower Grove House (herb garden behind the house) and Bottlebrushes.



Please note that you are welcome to pick up seeds elsewhere in the Garden after your program, but please do not enter planting beds or pick fruits from plants. All collected material must be found on the ground, and no material may be collected from conservatories.

2. Iris Garden/Knolls
Bald Cypress cones
Sweetgum balls
Redbud pods
Catapala
Paulownia pods
Buckeyes

1. Hosta Garden
Hickory nuts
Pecans

Logistics for Teachers

- ✿ Each Heaps of Seeds program is approximately 75 minutes on Garden grounds and 30-45 minutes for pre and post activities (prior to and after visiting the Garden). This program serves a maximum of 60 students.
- ✿ Program fees include admission for up to six adults per 30 students. (Additional adults will be charged normal admission rates.) Please try to bring at least one adult for every five students.
- ✿ Groups booking this program may eat lunch at Tower Grove Park, if they wish. **Please note that picnicking on the Garden's grounds is prohibited.
- ✿ This program is only available between September

For more information or to book this program, please visit www.mobot.org/schoolprograms or call the School Programs office at 314-577-5185.

Other Places to Explore...

Make the most of your visit by taking your students to explore the following areas after your program:

1. **The Climatron™** - Take a walk through the Garden's own tropical rainforest in the Climatron™ conservatory!
2. **The Kemper Center** - This 8-acre complex includes 23 demonstration gardens, including a vegetable garden, a bird garden, native gardens, gardens for butterflies and even a garden for children!
3. **The Victorian District** - Enjoy a walk around the ornate Victorian gardens. Henry Shaw's country home and the Kaiser Maze are also located in the Victorian District, however, both are closed during this time.